

## EZConvert<sup>BI</sup>

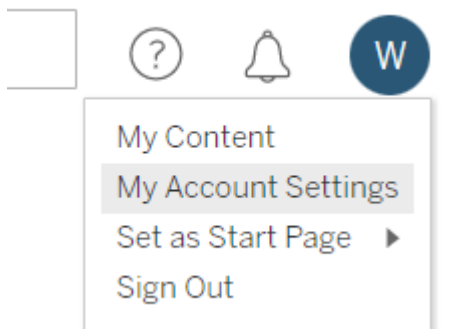
This document provides the steps on how to generate the tableau server API tokens and enabling the metadata API service.

### Why enable metadata service?

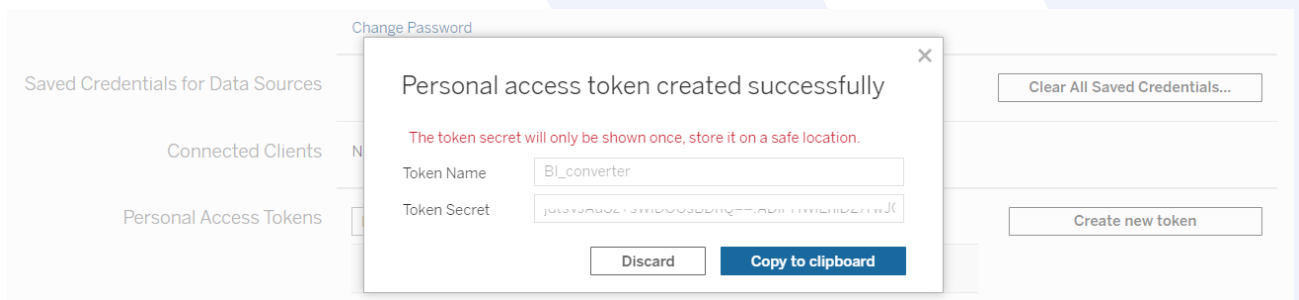
Enabling the Metadata API in Tableau Server allows you to programmatically access and manage metadata, such as data sources, workbooks, and projects, using REST API calls.

### Steps to generate API token.

1. Log in to the Tableau Server using an admin account.
2. Click on the username or profile picture in the top-right corner and select "My Account Settings."



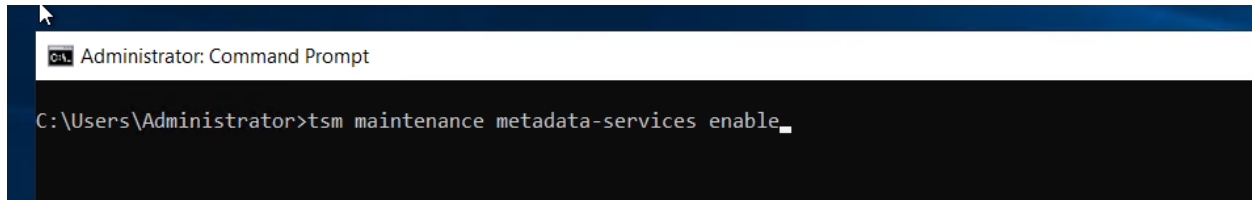
3. Scroll down to the "Personal Access Tokens" (PAT) section.
4. Enter a name for the Token and click on the "Create new token" button.



5. **Make sure to copy and save the Token Secret as it will not be shown again. Keep PATs secure.**
6. Whitelist the IP addresses from which PATs can be used.
7. Optionally, enable audit logging for API calls and PAT usage.
8. Revoke PATs once access is no longer needed.

## Steps to enable metadata API

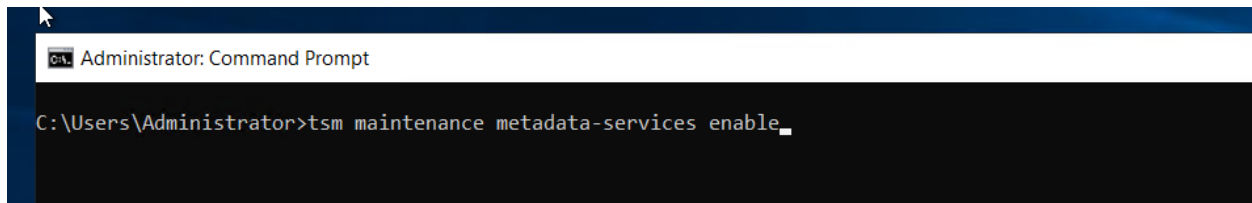
1. Open a command prompt as an admin on the initial node (where TSM is installed) in the cluster.



```
Administrator: Command Prompt
C:\Users\Administrator>tsm maintenance metadata-services enable_
```

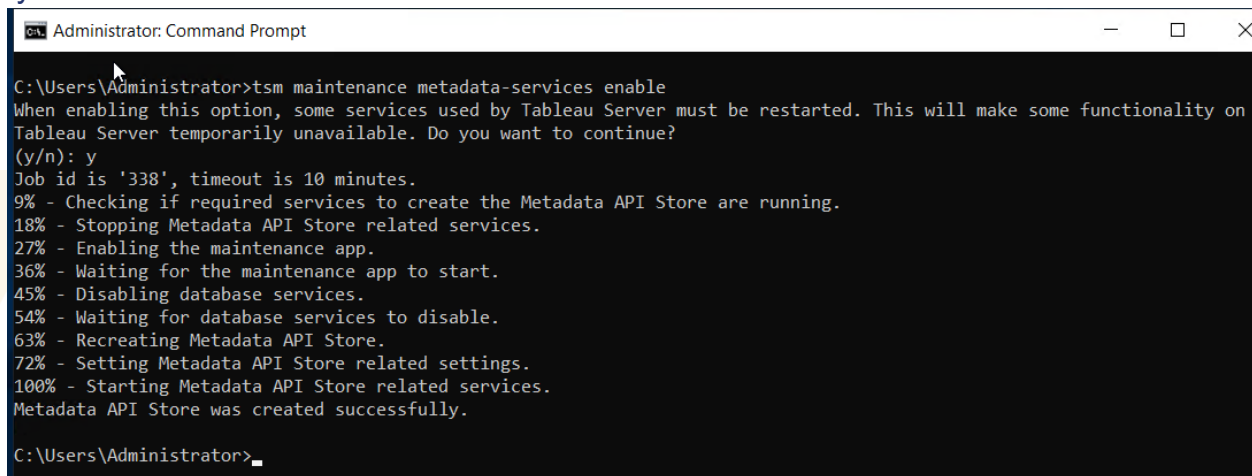
2. Run the below command:

**tsm maintenance metadata-services enable**



```
Administrator: Command Prompt
C:\Users\Administrator>tsm maintenance metadata-services enable_
```

3. Select 'y' on the confirmation screen.



```
Administrator: Command Prompt
C:\Users\Administrator>tsm maintenance metadata-services enable
When enabling this option, some services used by Tableau Server must be restarted. This will make some functionality on
Tableau Server temporarily unavailable. Do you want to continue?
(y/n): y
Job id is '338', timeout is 10 minutes.
9% - Checking if required services to create the Metadata API Store are running.
18% - Stopping Metadata API Store related services.
27% - Enabling the maintenance app.
36% - Waiting for the maintenance app to start.
45% - Disabling database services.
54% - Waiting for database services to disable.
63% - Recreating Metadata API Store.
72% - Setting Metadata API Store related settings.
100% - Starting Metadata API Store related services.
Metadata API Store was created successfully.
C:\Users\Administrator>
```

4. Metadata API store is now enabled.